



SGS COLOMBIA S.A.S.
CRS-F490101
ORDEN No. 4200-33801
CERTIFICADO No. CRS16955
ORDEN CERT. No. CO-CERT201201268-01
CERTIFICADO DE CONFORMIDAD DE PRODUCTO
Restar Solar Renewable Energy Co., Ltd.
No. 30 Yongshun Road, Zhulin Town, Jintan District, Changzhou, Jiangsu, China

Certifica que el producto identificado como Paneles Solares Fotovoltaicos, importados y/o fabricados y comercializados en Colombia por Restar Solar Renewable Energy Co., Ltd., con referencias relacionadas en las siguientes páginas del presente documento, han sido evaluados de conformidad con:

Resolución 90708 del 30 Agosto de 2013 del Ministerio de Minas y Energía - por lo cual se expide el Reglamento Técnico de Instalaciones Eléctricas - RETIE.
 Numeral 20.22 PANEELES SOLARES FOTOVOLTAICOS

Estos productos han sido sometidos a toma de muestras, inspección, ejecución de pruebas de laboratorio y evaluación del sistema de gestión de calidad del fabricante de acuerdo con el esquema de certificación 5 de la norma ISO/IEC 17067:2013.

Resultados obtenidos: CONFORME

Autorizado por:

SGS COLOMBIA S.A.S.

Camilo Ramirez
SGS Colombia S.A.S.
 Carrera 100 No. 25C-11, Bodega 3
 Bogotá D.C., Colombia

Fecha de Emisión: 2020-12-18
 Fecha de Vencimiento: 2023-12-18
 Versión 1

Página 1 de 10



Any complaint, appeal or enquiry about the validity of this certificate/report may be sent to so.servicioalcliente@sgs.com, via phone No. 7422274 ext. 13602 and its validity can be checked at <https://www.sgs.com/en/certified-clients-and-products>

This document is issued by the Company under its General Conditions of Service accessible at <http://www.sgs.com/terms-and-conditions.htm>. Attention is drawn to the limitation of liability, indemnification and jurisdiction issues defined therein.

Any holder of this document is advised that information contained herein reflects the Company's findings at the time of its intervention, only and within the limits of Client's instructions, if any. The Company's sole responsibility is to its Client and this document does not exonerate parties to a transaction from exercising all their rights and obligations under the transaction documents. Any unauthorized alteration, forgery or falsification of the content or appearance of this document is unlawful and offenders may be prosecuted to the fullest extent of the law.



SGS COLOMBIA S.A.S.

CRS-F490101

ORDEN No. 4200-33801

CERTIFICADO No. CRS16955

ORDEN CERT. No. CO-CERT201201268-01

CERTIFICADO DE CONFORMIDAD DE PRODUCTO

Restar Solar Renewable Energy Co., Ltd.

No. 30 Yongshun Road, Zhulin Town, Jintan District, Changzhou, Jiangsu, China

Paneles Solares Fotovoltaicos

Fabricadas por Restar Solar Renewable Energy Co., Ltd.

No. 30 Yongshun Road, Zhulin Town, Jintan District, Changzhou, Jiangsu, China

REFERENCIA	CORRIENTE DE CORTOCIRCUITO (A)	CORRIENTE NOMINAL (A)	POTENCIA MÁXIMA DEL MODULO (W)	TENSIÓN EN CIRCUITO ABIERTO (V)	TENSIÓN MÁXIMA DEL SISTEMA (V)	TENSIÓN NOMINAL (V)	TIPO	ESTANDAR DE ENSAYO
RT6C250P	8.81±3%	8.36 A	250 W	37.30±3%	1500 V	29.9 V	Panel Policristalino	IEC 61215-1:2016; IEC 61215-2:2016; IEC 61215-1-1:2016
RT6C255P	8.88±3%	8.47 A	255 W	37.50±3%	1500 V	30.1 V	Panel Policristalino	IEC 61215-1:2016; IEC 61215-2:2016; IEC 61215-1-1:2016
RT6C260P	8.95±3%	8.58 A	260 W	37.70±3%	1500 V	30.3 V	Panel Policristalino	IEC 61215-1:2016; IEC 61215-2:2016; IEC 61215-1-1:2016
RT6C265P	9.06±3%	8.69 A	265 W	37.80±3%	1500 V	30.5 V	Panel Policristalino	IEC 61215-1:2016; IEC 61215-2:2016; IEC 61215-1-1:2016
RT6C270P	9.18±3%	8.79 A	270 W	37.90±3%	1500 V	30 V	Panel Policristalino	IEC 61215-1:2016; IEC 61215-2:2016; IEC 61215-1-1:2016
RT6C275M	9.20±3%	8.76 A	275 W	38.80±3%	1500 V	31.4 V	Panel Monocristalino	IEC 61215-1:2016; IEC 61215-2:2016; IEC 61215-1-1:2016
RT6C275P	9.28±3%	8.84 A	275 W	38.10±3%	1500 V	31.1 V	Panel Policristalino	IEC 61215-1:2016; IEC 61215-2:2016; IEC 61215-1-1:2016
RT6C280M	9.24±3%	8.85 A	280 W	39.03±3%	1500 V	31.7 V	Panel Monocristalino	IEC 61215-1:2016; IEC 61215-2:2016; IEC 61215-1-1:2016
RT6C280P	9.40±3%	8.92 A	280 W	38.20±3%	1500 V	31.4 V	Panel Policristalino	IEC 61215-1:2016; IEC 61215-2:2016; IEC 61215-1-1:2016
RT6C285M	9.32±3%	8.91 A	285 W	39.12±3%	1500 V	32 V	Panel Monocristalino	IEC 61215-1:2016; IEC 61215-2:2016; IEC 61215-1-1:2016
RT6C285P	9.49±3%	9.02 A	285 W	38.30±3%	1500 V	31.6 V	Panel Policristalino	IEC 61215-1:2016; IEC 61215-2:2016; IEC 61215-1-1:2016
RT6C290M	9.42±3%	8.98 A	290 W	39.21±3%	1500 V	32.3 V	Panel Monocristalino	IEC 61215-1:2016; IEC 61215-2:2016; IEC 61215-1-1:2016
RT6C290P	9.58±3%	9.12 A	290 W	38.50±3%	1500 V	31.8 V	Panel Policristalino	IEC 61215-1:2016; IEC 61215-2:2016; IEC 61215-1-1:2016
RT6C295M	9.52±3%	9.05 A	295 W	39.30±3%	1500 V	32.6 V	Panel Monocristalino	IEC 61215-1:2016; IEC 61215-2:2016; IEC 61215-1-1:2016
RT6C295P	9.69±3%	9.22 A	295 W	38.60±3%	1500 V	32 V	Panel Policristalino	IEC 61215-1:2016; IEC 61215-2:2016;

Fecha de Emisión: 2020-12-18

Fecha de Vencimiento: 2023-12-18

Versión 1

Página 2 de 10



Any complaint, appeal or enquiry about the validity of this certificate/report may be sent to cs.service@sgs.com, via phone No. 7422274 ext. 13602 and its validity can be checked at <https://www.sgs.com/en/certified-clients-and-products>

This document is issued by the Company under its General Conditions of Service accessible at <http://www.sgs.com/terms-and-conditions.htm>. Attention is drawn to the limitation of liability, indemnification and jurisdiction issues defined therein.

Any holder of this document is advised that information contained herein reflects the Company's findings at the time of its intervention, only and within the limits of Client's instructions, if any. The Company's sole responsibility is to its Client and this document does not exonerate parties to a transaction from exercising all their rights and obligations under the transaction documents. Any unauthorized alteration, forgery or falsification of the content or appearance of this document is unlawful and offenders may be prosecuted to the fullest extent of the law.



SGS COLOMBIA S.A.S.
CRS-F490101
ORDEN No. 4200-33801
CERTIFICADO No. CRS16955
ORDEN CERT. No. CO-CERT201201268-01
CERTIFICADO DE CONFORMIDAD DE PRODUCTO
Restar Solar Renewable Energy Co., Ltd.
No. 30 Yongshun Road, Zhulin Town, Jintan District, Changzhou, Jiangsu, China

REFERENCIA	CORRIENTE DE CORTOCIRCUITO (A)	CORRIENTE NOMINAL (A)	POTENCIA MÁXIMA DEL MÓDULO (W)	TENSIÓN EN CIRCUITO ABIERTO (V)	TENSIÓN MÁXIMA DEL SISTEMA (V)	TENSIÓN NOMINAL (V)	TIPO	ESTANDAR DE ENSAYO
RT6C300M	9.62±3%	9.12 A	300 W	39.85±3%	1500 V	32.9 V	Panel Monocristalino	IEC 61215-1:2016 IEC 61215-2:2016 IEC 61215-1-1:2016
RT6C305M	9.73±3%	9.27 A	305 W	40.08±3%	1500 V	32.95 V	Panel Monocristalino	IEC 61215-1:2016 IEC 61215-2:2016 IEC 61215-1-1:2016
RT6C310M	9.77±3%	9.3 A	310 W	40.48±3%	1500 V	33.34 V	Panel Monocristalino	IEC 61215-1:2016 IEC 61215-2:2016 IEC 61215-1-1:2016
RT6C315M	9.88±3%	9.38 A	315 W	40.59±3%	1500 V	33.58 V	Panel Monocristalino	IEC 61215-1:2016 IEC 61215-2:2016 IEC 61215-1-1:2016
RT6C320M	9.94±3%	9.47 A	320 W	40.94±3%	1500 V	33.8 V	Panel Monocristalino	IEC 61215-1:2016 IEC 61215-2:2016 IEC 61215-1-1:2016
RT6D225P	8.95±3%	8.36 A	225 W	33.51±3%	1000 V	26.91 V	Panel Policristalino	IEC 61215-1:2016 IEC 61215-2:2016 IEC 61215-1-1:2016
RT6D230P	9.04±3%	8.47 A	230 W	33.83±3%	1000 V	27.15 V	Panel Policristalino	IEC 61215-1:2016 IEC 61215-2:2016 IEC 61215-1-1:2016
RT6D235P	9.13±3%	8.56 A	235 W	34.12±3%	1000 V	27.48 V	Panel Policristalino	IEC 61215-1:2016 IEC 61215-2:2016 IEC 61215-1-1:2016
RT6D240P	9.22±3%	8.68 A	240 W	34.21±3%	1000 V	27.69 V	Panel Policristalino	IEC 61215-1:2016 IEC 61215-2:2016 IEC 61215-1-1:2016
RT6D245P	9.31±3%	8.8 A	245 W	34.29±3%	1000 V	27.9 V	Panel Policristalino	IEC 61215-1:2016 IEC 61215-2:2016 IEC 61215-1-1:2016
RT6D250M	9.24±3%	8.85 A	250 W	34.91±3%	1000 V	28.25 V	Panel Monocristalino	IEC 61215-1:2016 IEC 61215-2:2016 IEC 61215-1-1:2016
RT6D250P	9.40±3%	8.92 A	250 W	34.38±3%	1000 V	28.11 V	Panel Policristalino	IEC 61215-1:2016 IEC 61215-2:2016 IEC 61215-1-1:2016
RT6D255M	9.32±3%	8.91 A	255 W	35.21±3%	1000 V	28.8 V	Panel Monocristalino	IEC 61215-1:2016 IEC 61215-2:2016 IEC 61215-1-1:2016
RT6D255P	9.49±3%	9.02 A	255 W	34.46±3%	1000 V	28.32 V	Panel Policristalino	IEC 61215-1:2016 IEC 61215-2:2016 IEC 61215-1-1:2016
RT6D260M	9.42±3%	8.98 A	260 W	35.29±3%	1000 V	29.07 V	Panel Monocristalino	IEC 61215-1:2016 IEC 61215-2:2016 IEC 61215-1-1:2016
RT6D260P	9.58±3%	9.12 A	260 W	34.65±3%	1000 V	28.52 V	Panel Policristalino	IEC 61215-1:2016 IEC 61215-2:2016 IEC 61215-1-1:2016
RT6D265M	9.52±3%	9.05 A	265 W	35.37±3%	1000 V	29.34 V	Panel Monocristalino	IEC 61215-1:2016

Fecha de Emisión: 2020-12-18
 Fecha de Vencimiento: 2023-12-18
 Versión 1

Página 3 de 10



Any complaint, appeal or enquiry about the validity of this certificate/report may be sent to cs.service@sgs.com, via phone No. 7422274 ext. 13602 and its validity can be checked at <https://www.sgs.com/en/certified-clients-and-products>

This document is issued by the Company under its General Conditions of Service accessible at <https://www.sgs.com/terms-and-conditions.htm>. Attention is drawn to the limitation of liability, indemnification and jurisdiction issues defined therein.

Any holder of this document is advised that information contained herein reflects the Company's findings at the time of its intervention, only and within the limits of Client's instructions, if any. The Company's sole responsibility is to its Client and this document does not exonerate parties to a transaction from exercising all their rights and obligations under the transaction documents. Any unauthorized alteration, forgery or falsification of the content or appearance of this document is unlawful and offenders may be prosecuted to the fullest extent of the law.



SGS COLOMBIA S.A.S.

CRS-F490101

ORDEN No. 4200-33801

CERTIFICADO No. CRS16955

ORDEN CERT. No. CO-CERT201201268-01

CERTIFICADO DE CONFORMIDAD DE PRODUCTO

Restar Solar Renewable Energy Co., Ltd.

No. 30 Yongshun Road, Zhulin Town, Jintan District, Changzhou, Jiangsu, China

REFERENCIA	CORRIENTE DE CORTOCIRCUITO (A)	CORRIENTE NOMINAL (A)	POTENCIA MÁXIMA DEL MÓDULO (W)	TENSIÓN EN CIRCUITO ABIERTO (V)	TENSIÓN MÁXIMA DEL SISTEMA (V)	TENSIÓN NOMINAL (V)	TIPO	ESTANDAR DE ENSAYO
							Monocrystalino	IEC 61215-2:2016; IEC 61215-1-1:2016
RT6D265P	9.69±3%	9.22 A	265 W	34.74±3%	1000 V	28.8 V	Panel Policristalino	IEC 61215-1:2016; IEC 61215-2:2016; IEC 61215-1-1:2016
RT6D270M	9.62±3%	9.12 A	270 W	35.86±3%	1000 V	29.61 V	Panel Monocrystalino	IEC 61215-1:2016; IEC 61215-2:2016; IEC 61215-1-1:2016
RT6D275M	9.73±3%	9.27 A	275 W	36.07±3%	1000 V	29.65 V	Panel Monocrystalino	IEC 61215-1:2016; IEC 61215-2:2016; IEC 61215-1-1:2016
RT6D280M	9.77±3%	9.3 A	280 W	36.43±3%	1000 V	30.01 V	Panel Monocrystalino	IEC 61215-1:2016; IEC 61215-2:2016; IEC 61215-1-1:2016
RT6D285M	9.88±3%	9.38 A	285 W	36.53±3%	1000 V	30.38 V	Panel Monocrystalino	IEC 61215-1:2016; IEC 61215-2:2016; IEC 61215-1-1:2016
RT6E150P	8.80±3%	8.18 A	150 W	22.30±3%	1000 V	18.32 V	Panel Policristalino	IEC 61215-1:2016; IEC 61215-2:2016; IEC 61215-1-1:2016
RT6E155P	8.92±3%	8.35 A	155 W	22.69±3%	1000 V	18.56 V	Panel Policristalino	IEC 61215-1:2016; IEC 61215-2:2016; IEC 61215-1-1:2016
RT6E160P	9.00±3%	8.48 A	160 W	23.17±3%	1000 V	18.86 V	Panel Policristalino	IEC 61215-1:2016; IEC 61215-2:2016; IEC 61215-1-1:2016
RT6E165M	9.00±3%	8.57 A	165 W	23.60±3%	1000 V	19.25 V	Panel Monocrystalino	IEC 61215-1:2016; IEC 61215-2:2016; IEC 61215-1-1:2016
RT6E165P	9.23±3%	8.74 A	165 W	23.22±3%	1000 V	18.9 V	Panel Policristalino	IEC 61215-1:2016; IEC 61215-2:2016; IEC 61215-1-1:2016
RT6E170M	9.20±3%	8.76 A	170 W	23.76±3%	1000 V	19.4 V	Panel Monocrystalino	IEC 61215-1:2016; IEC 61215-2:2016; IEC 61215-1-1:2016
RT6E170P	9.45±3%	8.96 A	170 W	23.35±3%	1000 V	18.97 V	Panel Policristalino	IEC 61215-1:2016; IEC 61215-2:2016; IEC 61215-1-1:2016
RT6E175M	9.36±3%	8.95 A	175 W	24.00±3%	1000 V	19.55 V	Panel Monocrystalino	IEC 61215-1:2016; IEC 61215-2:2016; IEC 61215-1-1:2016
RT6E175P	9.54±3%	9.03 A	175 W	23.79±3%	1000 V	19.38 V	Panel Policristalino	IEC 61215-1:2016; IEC 61215-2:2016; IEC 61215-1-1:2016
RT6E180M	9.50±3%	9.06 A	180 W	24.28±3%	1000 V	19.86 V	Panel Monocrystalino	IEC 61215-1:2016; IEC 61215-2:2016; IEC 61215-1-1:2016
RT6E185M	9.62±3%	9.12 A	185 W	24.60±3%	1000 V	20.28 V	Panel Monocrystalino	IEC 61215-1:2016; IEC 61215-2:2016; IEC 61215-1-1:2016

Fecha de Emisión: 2020-12-18

Fecha de Vencimiento: 2023-12-18

Versión 1

Página 4 de 10



Any complaint, appeal or enquiry about the validity of this certificate/report may be sent to cs.service@sgs.com, via phone No. 7422274 ext. 13602 and its validity can be checked at <https://www.sgs.com/en/certified-clients-and-products>

This document is issued by the Company under its General Conditions of Service accessible at <http://www.sgs.com/terms-and-conditions.htm>. Attention is drawn to the limitation of liability, indemnification and jurisdiction issues defined therein.

Any holder of this document is advised that information contained herein reflects the Company's findings at the time of its intervention, only and within the limits of Client's instructions, if any. The Company's sole responsibility is to its Client and this document does not exonerate parties to a transaction from exercising all their rights and obligations under the transaction documents. Any unauthorized alteration, forgery or falsification of the content or appearance of this document is unlawful and offenders may be prosecuted to the fullest extent of the law.

CRS-C-06-05 V.4 junio 2019



SGS COLOMBIA S.A.S.
CRS-F490101
ORDEN No. 4200-33801
CERTIFICADO No. CRS16955
ORDEN CERT. No. CO-CERT201201268-01
CERTIFICADO DE CONFORMIDAD DE PRODUCTO
Restar Solar Renewable Energy Co., Ltd.
No. 30 Yongshun Road, Zhulin Town, Jintan District, Changzhou, Jiangsu, China

REFERENCIA	CORRIENTE DE CORTOCIRCUITO (A)	CORRIENTE NOMINAL (A)	POTENCIA MÁXIMA DEL MÓDULO (W)	TENSIÓN EN CIRCUITO ABIERTO (V)	TENSIÓN MÁXIMA DEL SISTEMA (V)	TENSIÓN NOMINAL (V)	TIPO	ESTANDAR DE ENSAYO
RT6E190M	9.73±3%	9.27 A	190 W	25.00±3%	1000 V	20.5 V	Panel Monocristalino	IEC 61215-1:2016; IEC 61215-2:2016; IEC 61215-1-1:2016
RT6F200P	8.62±3%	8.27 A	200 W	30.60±3%	1000 V	24.2 V	Panel Policristalino	IEC 61215-1:2016; IEC 61215-2:2016; IEC 61215-1-1:2016
RT6F205P	8.72±3%	8.37 A	205 W	30.90±3%	1000 V	24.5 V	Panel Policristalino	IEC 61215-1:2016; IEC 61215-2:2016; IEC 61215-1-1:2016
RT6F210P	8.84±3%	8.46 A	210 W	31.10±3%	1000 V	24.8 V	Panel Policristalino	IEC 61215-1:2016; IEC 61215-2:2016; IEC 61215-1-1:2016
RT6F215P	9.00±3%	8.6 A	215 W	31.30±3%	1000 V	25 V	Panel Policristalino	IEC 61215-1:2016; IEC 61215-2:2016; IEC 61215-1-1:2016
RT6F220M	9.24±3%	8.52 A	220 W	31.22±3%	1000 V	25.82 V	Panel Monocristalino	IEC 61215-1:2016; IEC 61215-2:2016; IEC 61215-1-1:2016
RT6F220P	9.14±3%	8.73 A	220 W	31.50±3%	1000 V	25.2 V	Panel Policristalino	IEC 61215-1:2016; IEC 61215-2:2016; IEC 61215-1-1:2016
RT6F225M	9.32±3%	8.67 A	225 W	31.30±3%	1000 V	25.98 V	Panel Monocristalino	IEC 61215-1:2016; IEC 61215-2:2016; IEC 61215-1-1:2016
RT6F225P	9.28±3%	8.86 A	225 W	31.70±3%	1000 V	25.4 V	Panel Policristalino	IEC 61215-1:2016; IEC 61215-2:2016; IEC 61215-1-1:2016
RT6F230M	9.42±3%	8.82 A	230 W	31.37±3%	1000 V	26.08 V	Panel Monocristalino	IEC 61215-1:2016; IEC 61215-2:2016; IEC 61215-1-1:2016
RT6F230P	9.42±3%	8.99 A	230 W	31.90±3%	1000 V	25.6 V	Panel Policristalino	IEC 61215-1:2016; IEC 61215-2:2016; IEC 61215-1-1:2016
RT6F235M	9.52±3%	8.97 A	235 W	31.44±3%	1000 V	26.2 V	Panel Monocristalino	IEC 61215-1:2016; IEC 61215-2:2016; IEC 61215-1-1:2016
RT6F235P	9.56±3%	9.12 A	235 W	32.10±3%	1000 V	25.8 V	Panel Policristalino	IEC 61215-1:2016; IEC 61215-2:2016; IEC 61215-1-1:2016
RT6F240M	9.62±3%	9.12 A	240 W	31.88±3%	1000 V	26.32 V	Panel Monocristalino	IEC 61215-1:2016; IEC 61215-2:2016; IEC 61215-1-1:2016
RT6F245M	9.73±3%	9.28 A	245 W	32.06±3%	1000 V	26.4 V	Panel Monocristalino	IEC 61215-1:2016; IEC 61215-2:2016; IEC 61215-1-1:2016
RT6F250M	9.77±3%	9.3 A	250 W	32.51±3%	1000 V	26.88 V	Panel Monocristalino	IEC 61215-1:2016; IEC 61215-2:2016; IEC 61215-1-1:2016
RT6F255M	9.88±3%	9.38 A	255 W	32.79±3%	1000 V	27.18 V	Panel Monocristalino	IEC 61215-1:2016; IEC 61215-2:2016;

Fecha de Emisión: 2020-12-18
 Fecha de Vencimiento: 2023-12-18
 Versión 1

Página 5 de 10



Any complaint, appeal or enquiry about the validity of this certificate/report may be sent to cs.service@sgs.com, via phone No. 7422274 ext. 13602 and its validity can be checked at <https://www.sgs.com/en/certified-clients-and-products>

This document is issued by the Company under its General Conditions of Service accessible at <http://www.sgs.com/terms-and-conditions.html>. Attention is drawn to the limitation of liability, indemnification and jurisdiction issues defined therein.

Any holder of this document is advised that information contained herein reflects the Company's findings at the time of its intervention, only and within the limits of Client's instructions, if any. The Company's sole responsibility is to its Client and this document does not exonerate parties to a transaction from exercising all their rights and obligations under the transaction documents. Any unauthorized alteration, forgery or falsification of the content or appearance of this document is unlawful and offenders may be prosecuted to the fullest extent of the law.



SGS COLOMBIA S.A.S.
CRS-F490101
ORDEN No. 4200-33801
CERTIFICADO No. CRS16955
ORDEN CERT. No. CO-CERT201201268-01
CERTIFICADO DE CONFORMIDAD DE PRODUCTO
Restar Solar Renewable Energy Co., Ltd.
No. 30 Yongshun Road, Zhulin Town, Jintan District, Changzhou, Jiangsu, China

REFERENCIA	CORRIENTE DE CORTOCIRCUITO (A)	CORRIENTE NOMINAL (A)	POTENCIA MÁXIMA DEL MÓDULO (W)	TENSIÓN EN CIRCUITO ABIERTO (V)	TENSIÓN MÁXIMA DEL SISTEMA (V)	TENSIÓN NOMINAL (V)	TIPO	ESTANDAR DE ENSAYO
RT6G100P	8.66±3%	8.22 A	100 W	15.10±3%	1000 V	12.17 V	Panel Policristalino	IEC 61215-1-1:2016 IEC 61215-1:2016; IEC 61215-2:2016; IEC 61215-1-1:2016
RT6G105P	8.97±3%	8.58 A	105 W	15.27±3%	1000 V	12.35 V	Panel Policristalino	IEC 61215-1:2016; IEC 61215-2:2016; IEC 61215-1-1:2016
RT6G110M	9.28±3%	8.61 A	110 W	15.42±3%	1000 V	12.77 V	Panel Monocristalino	IEC 61215-1:2016; IEC 61215-2:2016; IEC 61215-1-1:2016
RT6G110P	9.23±3%	8.74 A	110 W	15.47±3%	1000 V	12.6 V	Panel Policristalino	IEC 61215-1:2016; IEC 61215-2:2016; IEC 61215-1-1:2016
RT6G115M	9.58±3%	8.88 A	115 W	15.56±3%	1000 V	12.95 V	Panel Monocristalino	IEC 61215-1:2016; IEC 61215-2:2016; IEC 61215-1-1:2016
RT6G115P	9.47±3%	8.96 A	115 W	15.63±3%	1000 V	12.83 V	Panel Policristalino	IEC 61215-1:2016; IEC 61215-2:2016; IEC 61215-1-1:2016
RT6G120M	9.88±3%	9.12 A	120 W	15.77±3%	1000 V	13.16 V	Panel Monocristalino	IEC 61215-1:2016; IEC 61215-2:2016; IEC 61215-1-1:2016
RT6G125M	10.08±3%	9.46 A	125 W	16.15±3%	1000 V	13.35 V	Panel Monocristalino	IEC 61215-1:2016; IEC 61215-2:2016; IEC 61215-1-1:2016
RT6I300P	8.55±3%	8.22 A	300 W	45.80±3%	1500 V	36.5 V	Panel Policristalino	IEC 61215-1:2016; IEC 61215-2:2016; IEC 61215-1-1:2016
RT6I305P	8.64±3%	8.31 A	305 W	46.00±3%	1500 V	36.7 V	Panel Policristalino	IEC 61215-1:2016; IEC 61215-2:2016; IEC 61215-1-1:2016
RT6I310P	8.73±3%	8.4 A	310 W	46.20±3%	1500 V	36.9 V	Panel Policristalino	IEC 61215-1:2016; IEC 61215-2:2016; IEC 61215-1-1:2016
RT6I315P	8.82±3%	8.49 A	315 W	46.40±3%	1500 V	37.1 V	Panel Policristalino	IEC 61215-1:2016; IEC 61215-2:2016; IEC 61215-1-1:2016
RT6I320P	8.91±3%	8.58 A	320 W	46.60±3%	1500 V	37.3 V	Panel Policristalino	IEC 61215-1:2016; IEC 61215-2:2016; IEC 61215-1-1:2016
RT6I325M	8.99±3%	8.66 A	325 W	46.80±3%	1500 V	37.5 V	Panel Monocristalino	IEC 61215-1:2016; IEC 61215-2:2016; IEC 61215-1-1:2016
RT6I325P	8.99±3%	8.66 A	325 W	46.80±3%	1500 V	37.5 V	Panel Policristalino	IEC 61215-1:2016; IEC 61215-2:2016; IEC 61215-1-1:2016
RT6I330M	9.08±3%	8.75 A	330 W	47.00±3%	1500 V	37.7 V	Panel Monocristalino	IEC 61215-1:2016; IEC 61215-2:2016; IEC 61215-1-1:2016
RT6I330P	9.08±3%	8.75 A	330 W	47.00±3%	1500 V	37.7 V	Panel	IEC 61215-1:2016;

Fecha de Emisión: 2020-12-18
 Fecha de Vencimiento: 2023-12-18
 Versión 1

Página 6 de 10



Any complaint, appeal or enquiry about the validity of this certificate/report may be sent to cs.service@sgs.com, via phone No. 7422274 ext. 13602 and its validity can be checked at <https://www.sgs.com/en/certified-clients-and-products>

This document is issued by the Company under its General Conditions of Service accessible at <https://www.sgs.com/terms-and-conditions.htm>. Attention is drawn to the limitation of liability, indemnification and jurisdiction issues defined therein.

Any holder of this document is advised that information contained herein reflects the Company's findings at the time of its intervention, only and within the limits of Client's instructions, if any. The Company's sole responsibility is to its Client and this document does not exonerate parties to a transaction from exercising all their rights and obligations under the transaction documents. Any unauthorized alteration, forgery or falsification of the content or appearance of this document is unlawful and offenders may be prosecuted to the fullest extent of the law.



SGS COLOMBIA S.A.S.

CRS-F490101

ORDEN No. 4200-33801

CERTIFICADO No. CRS16955

ORDEN CERT. No. CO-CERT201201268-01

CERTIFICADO DE CONFORMIDAD DE PRODUCTO

Restar Solar Renewable Energy Co., Ltd.

No. 30 Yongshun Road, Zhulin Town, Jintan District, Changzhou, Jiangsu, China

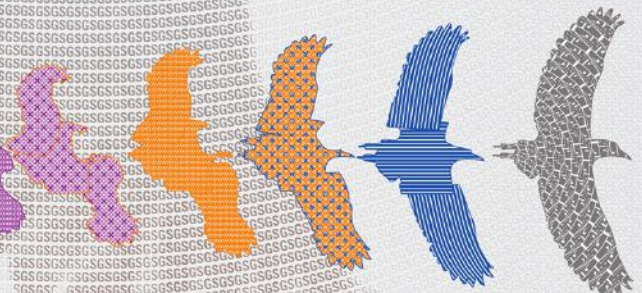
REFERENCIA	CORRIENTE DE CORTOCIRCUITO (A)	CORRIENTE NOMINAL (A)	POTENCIA MÁXIMA DEL MÓDULO (W)	TENSIÓN EN CIRCUITO ABIERTO (V)	TENSIÓN MÁXIMA DEL SISTEMA (V)	TENSIÓN NOMINAL (V)	TIPO	ESTANDAR DE ENSAYO
							Policristalino	IEC 61215-2:2016; IEC 61215-1-1:2016
RT6I335M	9.17±3%	8.84 A	335 W	47.20±3%	1500 V	37.9 V	Panel Monocristalino	IEC 61215-1:2016; IEC 61215-2:2016; IEC 61215-1-1:2016
RT6I335P	9.13±3%	8.82 A	335 W	47.30±3%	1500 V	37.99 V	Panel Policristalino	IEC 61215-1:2016; IEC 61215-2:2016; IEC 61215-1-1:2016
RT6I340M	9.26±3%	8.92 A	340 W	47.40±3%	1500 V	38.1 V	Panel Monocristalino	IEC 61215-1:2016; IEC 61215-2:2016; IEC 61215-1-1:2016
RT6I340P	9.22±3%	8.9 A	340 W	47.50±3%	1500 V	38.2 V	Panel Policristalino	IEC 61215-1:2016; IEC 61215-2:2016; IEC 61215-1-1:2016
RT6I345M	9.35±3%	9.01 A	345 W	47.60±3%	1500 V	38.3 V	Panel Monocristalino	IEC 61215-1:2016; IEC 61215-2:2016; IEC 61215-1-1:2016
RT6I345P	9.32±3%	0.375	345 W	47.60±3%	1500 V	38.3 V	Panel Policristalino	IEC 61215-1:2016; IEC 61215-2:2016; IEC 61215-1-1:2016
RT6I350M	9.44±3%	9.09 A	350 W	47.80±3%	1500 V	38.5 V	Panel Monocristalino	IEC 61215-1:2016; IEC 61215-2:2016; IEC 61215-1-1:2016
RT6I350P	9.42±3%	9.11 A	350 W	47.70±3%	1500 V	38.4 V	Panel Policristalino	IEC 61215-1:2016; IEC 61215-2:2016; IEC 61215-1-1:2016
RT6I355M	9.53±3%	9.17 A	355 W	48.00±3%	1500 V	38.7 V	Panel Monocristalino	IEC 61215-1:2016; IEC 61215-2:2016; IEC 61215-1-1:2016
RT6I355P	9.52±3%	9.22 A	355 W	47.80±3%	1500 V	38.5 V	Panel Policristalino	IEC 61215-1:2016; IEC 61215-2:2016; IEC 61215-1-1:2016
RT6I360M	9.61±3%	9.25 A	360 W	48.20±3%	1500 V	38.9 V	Panel Monocristalino	IEC 61215-1:2016; IEC 61215-2:2016; IEC 61215-1-1:2016
RT6I360P	9.62±3%	9.32 A	360 W	47.90±3%	1500 V	38.6 V	Panel Policristalino	IEC 61215-1:2016; IEC 61215-2:2016; IEC 61215-1-1:2016
RT6I365M	9.69±3%	9.33 A	365 W	48.40±3%	1500 V	39.1 V	Panel Monocristalino	IEC 61215-1:2016; IEC 61215-2:2016; IEC 61215-1-1:2016
RT6I370M	9.77±3%	9.44 A	370 W	48.60±3%	1500 V	39.2 V	Panel Monocristalino	IEC 61215-1:2016; IEC 61215-2:2016; IEC 61215-1-1:2016
RT6I375M	9.85±3%	9.52 A	375 W	48.70±3%	1500 V	39.4 V	Panel Monocristalino	IEC 61215-1:2016; IEC 61215-2:2016; IEC 61215-1-1:2016
RT6I380M	9.95±3%	9.62 A	380 W	48.80±3%	1500 V	39.5 V	Panel Monocristalino	IEC 61215-1:2016; IEC 61215-2:2016; IEC 61215-1-1:2016

Fecha de Emisión: 2020-12-18

Fecha de Vencimiento: 2023-12-18

Versión 1

Página 7 de 10



Any complaint, appeal or enquiry about the validity of this certificate/report may be sent to cs.service@sgs.com, via phone No. 7422274 ext. 13602 and its validity can be checked at <https://www.sgs.com/en/certified-clients-and-products>

This document is issued by the Company under its General Conditions of Service accessible at <http://www.sgs.com/terms-and-conditions.htm>. Attention is drawn to the limitation of liability, indemnification and jurisdiction issues defined therein.

Any holder of this document is advised that information contained herein reflects the Company's findings at the time of its intervention, only and within the limits of Client's instructions, if any. The Company's sole responsibility is to its Client and this document does not exonerate parties to a transaction from exercising all their rights and obligations under the transaction documents. Any unauthorized alteration, forgery or falsification of the content or appearance of this document is unlawful and offenders may be prosecuted to the fullest extent of the law.



SGS COLOMBIA S.A.S.
CRS-F490101
ORDEN No. 4200-33801
CERTIFICADO No. CRS16955
ORDEN CERT. No. CO-CERT201201268-01
CERTIFICADO DE CONFORMIDAD DE PRODUCTO
Restar Solar Renewable Energy Co., Ltd.
No. 30 Yongshun Road, Zhulin Town, Jintan District, Changzhou, Jiangsu, China

REFERENCIA	CORRIENTE DE CORTOCIRCUITO (A)	CORRIENTE NOMINAL (A)	POTENCIA MÁXIMA DEL MÓDULO (W)	TENSIÓN EN CIRCUITO ABIERTO (V)	TENSIÓN MÁXIMA DEL SISTEMA (V)	TENSIÓN NOMINAL (V)	TIPO	ESTANDAR DE ENSAYO
RT6I385M	10.05±3%	9.72 A	385 W	48.90±3%	1500 V	39.6 V	Panel Monocristalino	IEC 61215-1:2016; IEC 61215-2:2016; IEC 61215-1-1:2016
RT6I390M	10.15±3%	9.82 A	390 W	49.00±3%	1500 V	39.7 V	Panel Monocristalino	IEC 61215-1:2016; IEC 61215-2:2016; IEC 61215-1-1:2016
RT6K250P	8.72±3%	8.32 A	250 W	37.40±3%	1500 V	30.05 V	Panel Policristalino	IEC 61215-1:2016; IEC 61215-2:2016; IEC 61215-1-1:2016
RT6K255P	8.82±3%	8.42 A	255 W	37.60±3%	1500 V	30.3 V	Panel Policristalino	IEC 61215-1:2016; IEC 61215-2:2016; IEC 61215-1-1:2016
RT6K260P	8.92±3%	8.52 A	260 W	37.80±3%	1500 V	30.52 V	Panel Policristalino	IEC 61215-1:2016; IEC 61215-2:2016; IEC 61215-1-1:2016
RT6K265P	9.02±3%	8.62 A	265 W	38.00±3%	1500 V	30.74 V	Panel Policristalino	IEC 61215-1:2016; IEC 61215-2:2016; IEC 61215-1-1:2016
RT6K270P	9.12±3%	8.72 A	270 W	38.20±3%	1500 V	31 V	Panel Policristalino	IEC 61215-1:2016; IEC 61215-2:2016; IEC 61215-1-1:2016
RT6K275P	9.22±3%	8.82 A	275 W	38.40±3%	1500 V	31.2 V	Panel Policristalino	IEC 61215-1:2016; IEC 61215-2:2016; IEC 61215-1-1:2016
RT6K280M	9.22±3%	8.79 A	280 W	39.10±3%	1500 V	31.85 V	Panel Monocristalino	IEC 61215-1:2016; IEC 61215-2:2016; IEC 61215-1-1:2016
RT6K280P	9.32±3%	8.92 A	280 W	38.60±3%	1500 V	31.4 V	Panel Policristalino	IEC 61215-1:2016; IEC 61215-2:2016; IEC 61215-1-1:2016
RT6K285M	9.32±3%	8.89 A	285 W	39.30±3%	1500 V	32.06 V	Panel Monocristalino	IEC 61215-1:2016; IEC 61215-2:2016; IEC 61215-1-1:2016
RT6K285P	9.42±3%	9.02 A	285 W	38.80±3%	1500 V	31.6 V	Panel Policristalino	IEC 61215-1:2016; IEC 61215-2:2016; IEC 61215-1-1:2016
RT6K290M	9.42±3%	8.99 A	290 W	39.50±3%	1500 V	32.26 V	Panel Monocristalino	IEC 61215-1:2016; IEC 61215-2:2016; IEC 61215-1-1:2016
RT6K290P	9.52±3%	9.12 A	290 W	39.00±3%	1500 V	31.8 V	Panel Policristalino	IEC 61215-1:2016; IEC 61215-2:2016; IEC 61215-1-1:2016
RT6K295M	9.52±3%	9.09 A	295 W	39.70±3%	1500 V	32.45 V	Panel Monocristalino	IEC 61215-1:2016; IEC 61215-2:2016; IEC 61215-1-1:2016
RT6K295P	9.62±3%	9.22 A	295 W	39.20±3%	1500 V	32 V	Panel Policristalino	IEC 61215-1:2016; IEC 61215-2:2016; IEC 61215-1-1:2016
RT6K300M	9.62±3%	9.19 A	300 W	39.90±3%	1500 V	32.64 V	Panel Monocristalino	IEC 61215-1:2016; IEC 61215-2:2016;

Fecha de Emisión: 2020-12-18
 Fecha de Vencimiento: 2023-12-18
 Versión 1

Página 8 de 10



Any complaint, appeal or enquiry about the validity of this certificate/report may be sent to cs.service@sgs.com, via phone No. 7422274 ext. 13602 and its validity can be checked at <https://www.sgs.com/en/certified-clients-and-products>

This document is issued by the Company under its General Conditions of Service accessible at <http://www.sgs.com/terms-and-conditions.html>. Attention is drawn to the limitation of liability, indemnification and jurisdiction issues defined therein.

Any holder of this document is advised that information contained herein reflects the Company's findings at the time of its intervention, only and within the limits of Client's instructions, if any. The Company's sole responsibility is to its Client and this document does not exonerate parties to a transaction from exercising all their rights and obligations under the transaction documents. Any unauthorized alteration, forgery or falsification of the content or appearance of this document is unlawful and offenders may be prosecuted to the fullest extent of the law.



SGS COLOMBIA S.A.S.
CRS-F490101
ORDEN No. 4200-33801
CERTIFICADO No. CRS16955
ORDEN CERT. No. CO-CERT201201268-01
CERTIFICADO DE CONFORMIDAD DE PRODUCTO
Restar Solar Renewable Energy Co., Ltd.
No. 30 Yongshun Road, Zhulin Town, Jintan District, Changzhou, Jiangsu, China

REFERENCIA	CORRIENTE DE CORTOCIRCUITO (A)	CORRIENTE NOMINAL (A)	POTENCIA MÁXIMA DEL MODULO (W)	TENSIÓN EN CIRCUITO ABIERTO (V)	TENSIÓN MÁXIMA DEL SISTEMA (V)	TENSIÓN NOMINAL (V)	TIPO	ESTANDAR DE ENSAYO
RT6K300P	9.72±3%	9.31 A	300 W	39.40±3%	1500 V	32.2 V	Panel Policristalino	IEC 61215-1:2016 IEC 61215-2:2016 IEC 61215-1-1:2016
RT6K305M	9.72±3%	9.29 A	305 W	40.10±3%	1500 V	32.83 V	Panel Monocristalino	IEC 61215-1:2016 IEC 61215-2:2016 IEC 61215-1-1:2016
RT6K310M	9.82±3%	9.39 A	310 W	40.30±3%	1500 V	33 V	Panel Monocristalino	IEC 61215-1:2016 IEC 61215-2:2016 IEC 61215-1-1:2016
RT6K315M	9.92±3%	9.49 A	315 W	40.50±3%	1500 V	33.2 V	Panel Monocristalino	IEC 61215-1:2016 IEC 61215-2:2016 IEC 61215-1-1:2016
RT6K320M	10.01±3%	9.58 A	320 W	40.70±3%	1500 V	33.4 V	Panel Monocristalino	IEC 61215-1:2016 IEC 61215-2:2016 IEC 61215-1-1:2016
RT6K325M	10.10±3%	9.67 A	325 W	40.90±3%	1500 V	33.6 V	Panel Monocristalino	IEC 61215-1:2016 IEC 61215-2:2016 IEC 61215-1-1:2016
RT6S300P	8.66±3%	8.22 A	300 W	45.30±3%	1500 V	36.5 V	Panel Policristalino	IEC 61215-1:2016 IEC 61215-2:2016 IEC 61215-1-1:2016
RT6S305P	8.74±3%	8.36 A	305 W	45.45±3%	1500 V	36.5 V	Panel Policristalino	IEC 61215-1:2016 IEC 61215-2:2016 IEC 61215-1-1:2016
RT6S310P	8.87±3%	8.5 A	310 W	45.71±3%	1500 V	36.87 V	Panel Policristalino	IEC 61215-1:2016 IEC 61215-2:2016 IEC 61215-1-1:2016
RT6S315P	8.97±3%	8.58 A	315 W	45.81±3%	1500 V	37.06 V	Panel Policristalino	IEC 61215-1:2016 IEC 61215-2:2016 IEC 61215-1-1:2016
RT6S320P	9.08±3%	8.61 A	320 W	45.90±3%	1500 V	37.3 V	Panel Policristalino	IEC 61215-1:2016 IEC 61215-2:2016 IEC 61215-1-1:2016
RT6S325M	9.18±3%	8.51 A	325 W	46.12±3%	1500 V	38.19 V	Panel Monocristalino	IEC 61215-1:2016 IEC 61215-2:2016 IEC 61215-1-1:2016
RT6S325P	9.15±3%	8.67 A	325 W	46.10±3%	1500 V	37.5 V	Panel Policristalino	IEC 61215-1:2016 IEC 61215-2:2016 IEC 61215-1-1:2016
RT6S330M	9.28±3%	8.61 A	330 W	46.26±3%	1500 V	38.32 V	Panel Monocristalino	IEC 61215-1:2016 IEC 61215-2:2016 IEC 61215-1-1:2016
RT6S330P	9.23±3%	8.74 A	330 W	46.40±3%	1500 V	37.8 V	Panel Policristalino	IEC 61215-1:2016 IEC 61215-2:2016 IEC 61215-1-1:2016
RT6S335M	9.37±3%	8.7 A	335 W	46.42±3%	1500 V	38.5 V	Panel Monocristalino	IEC 61215-1:2016 IEC 61215-2:2016 IEC 61215-1-1:2016
RT6S335P	9.30±3%	8.81 A	335 W	46.60±3%	1500 V	38 V	Panel	IEC 61215-1:2016;

Fecha de Emisión: 2020-12-18
 Fecha de Vencimiento: 2023-12-18
 Versión 1

Página 9 de 10



Any complaint, appeal or enquiry about the validity of this certificate/report may be sent to cs.service@sgs.com, via phone No. 7422274 ext. 13602 and its validity can be checked at <https://www.sgs.com/en/certified-clients-and-products>

This document is issued by the Company under its General Conditions of Service accessible at <http://www.sgs.com/terms-and-conditions.htm>. Attention is drawn to the limitation of liability, indemnification and jurisdiction issues defined therein.

Any holder of this document is advised that information contained herein reflects the Company's findings at the time of its intervention, only and within the limits of Client's instructions, if any. The Company's sole responsibility is to its Client and this document does not exonerate parties to a transaction from exercising all their rights and obligations under the transaction documents. Any unauthorized alteration, forgery or falsification of the content or appearance of this document is unlawful and offenders may be prosecuted to the fullest extent of the law.



SGS COLOMBIA S.A.S.

CRS-F490101

ORDEN No. 4200-33801

CERTIFICADO No. CRS16955

ORDEN CERT. No. CO-CERT201201268-01

CERTIFICADO DE CONFORMIDAD DE PRODUCTO

Restar Solar Renewable Energy Co., Ltd.

No. 30 Yongshun Road, Zhulin Town, Jintan District, Changzhou, Jiangsu, China

REFERENCIA	CORRIENTE DE CORTOCIRCUITO (A)	CORRIENTE NOMINAL (A)	POTENCIA MÁXIMA DEL MODULO (W)	TENSIÓN EN CIRCUITO ABIERTO (V)	TENSIÓN MÁXIMA DEL SISTEMA (V)	TENSIÓN NOMINAL (V)	TIPO	ESTANDAR DE ENSAYO
							Policristalino	IEC 61215-2:2016; IEC 61215-1-1:2016
RT6S340M	9.47±3%	8.79 A	340 W	46.58±3%	1500 V	38.68 V	Panel Monocristalino	IEC 61215-1:2016; IEC 61215-2:2016; IEC 61215-1-1:2016
RT6S340P	9.38±3%	8.88 A	340 W	46.80±3%	1500 V	38.3 V	Panel Policristalino	IEC 61215-1:2016; IEC 61215-2:2016; IEC 61215-1-1:2016
RT6S345M	9.58±3%	8.88 A	345 W	46.68±3%	1500 V	38.86 V	Panel Monocristalino	IEC 61215-1:2016; IEC 61215-2:2016; IEC 61215-1-1:2016
RT6S345P	9.47±3%	8.96 A	345 W	46.90±3%	1500 V	38.5 V	Panel Policristalino	IEC 61215-1:2016; IEC 61215-2:2016; IEC 61215-1-1:2016
RT6S350M	9.69±3%	8.96 A	350 W	46.88±3%	1500 V	39.06 V	Panel Monocristalino	IEC 61215-1:2016; IEC 61215-2:2016; IEC 61215-1-1:2016
RT6S350P	9.54±3%	9.03 A	350 W	47.12±3%	1500 V	38.76 V	Panel Policristalino	IEC 61215-1:2016; IEC 61215-2:2016; IEC 61215-1-1:2016
RT6S355M	9.79±3%	9.04 A	355 W	47.10±3%	1500 V	39.28 V	Panel Monocristalino	IEC 61215-1:2016; IEC 61215-2:2016; IEC 61215-1-1:2016
RT6S355P	9.62±3%	9.11 A	355 W	47.32±3%	1500 V	38.96 V	Panel Policristalino	IEC 61215-1:2016; IEC 61215-2:2016; IEC 61215-1-1:2016
RT6S360M	9.88±3%	9.12 A	360 W	47.30±3%	1500 V	39.48 V	Panel Monocristalino	IEC 61215-1:2016; IEC 61215-2:2016; IEC 61215-1-1:2016
RT6S365M	9.88±3%	9.2 A	365 W	48.20±3%	1500 V	39.7 V	Panel Monocristalino	IEC 61215-1:2016; IEC 61215-2:2016; IEC 61215-1-1:2016
RT6S370M	9.93±3%	9.28 A	370 W	48.35±3%	1500 V	39.9 V	Panel Monocristalino	IEC 61215-1:2016; IEC 61215-2:2016; IEC 61215-1-1:2016
RT6S375M	9.98±3%	9.36 A	375 W	48.45±3%	1500 V	40.06 V	Panel Monocristalino	IEC 61215-1:2016; IEC 61215-2:2016; IEC 61215-1-1:2016
RT6S380M	10.08±3%	9.46 A	380 W	48.55±3%	1500 V	40.17 V	Panel Monocristalino	IEC 61215-1:2016; IEC 61215-2:2016; IEC 61215-1-1:2016
RT6S385M	10.18±3%	9.56 A	385 W	48.65±3%	1500 V	40.28 V	Panel Monocristalino	IEC 61215-1:2016; IEC 61215-2:2016; IEC 61215-1-1:2016

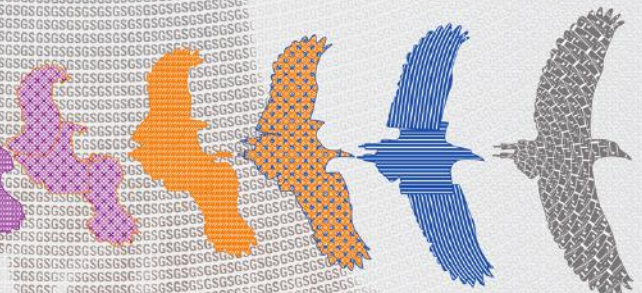
FIN DEL DOCUMENTO

Fecha de Emisión: 2020-12-18

Fecha de Vencimiento: 2023-12-18

Versión 1

Página 10 de 10



Any complaint, appeal or enquiry about the validity of this certificate/report may be sent to cs.service@sgs.com, via phone No. 7422274 ext. 13602 and its validity can be checked at <https://www.sgs.com/en/certified-clients-and-products>

This document is issued by the Company under its General Conditions of Service accessible at <http://www.sgs.com/terms-and-conditions.html>. Attention is drawn to the limitation of liability, indemnification and jurisdiction issues defined therein.

Any holder of this document is advised that information contained herein reflects the Company's findings at the time of its intervention, only and within the limits of Client's instructions, if any. The Company's sole responsibility is to its Client and this document does not exonerate parties to a transaction from exercising all their rights and obligations under the transaction documents. Any unauthorized alteration, forgery or falsification of the content or appearance of this document is unlawful and offenders may be prosecuted to the fullest extent of the law.